



KCL Construction Ltd.
A wholly-owned subsidiary of Keio Holdings Ltd.

www.kcltd.com.hk
info@kcltd.com.hk
Suite 01, 25/F, Pacific Plaza, 418 Des Voeux Road West, Hong Kong



Copyright © 2022 KCL Construction Ltd. All Rights Reserved.

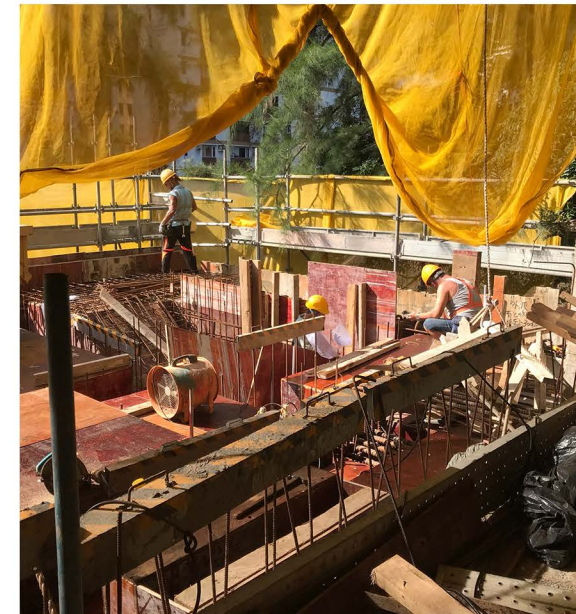
KCL CONSTRUCTION

REGISTERED GENERAL BUILDING CONTRACTOR (REGISTRATION NO.: GBC 9/2006)



VERTICAL INTEGRATION

ONE-STOP CONSTRUCTION SERVICE



About KCL Construction

Established in 2009, KCL Construction is a wholly-owned subsidiary of Keio.

By integrating with the Group's core business in Electrical and Mechanical Engineering and leveraging on the shared resources, KCL Construction aims to create opportunities for growth within the industry with diversified, value-adding, end-to-end construction solutions.

KCL Construction is a vertically expanded business of Keio, established to effectively speed up and streamline the entire construction process.

KCL Construction is a Registered General Building Contractor authorized to provide general building works and street works that are not categorized as 'specialized work' by the Building Authority.



OUR SERVICES

01 | New Building Works

Common new building works include demolition, site formation, excavation and lateral support, and foundation works. Registered General Building Contractors can appoint and monitor specialist contractors for the building work concerned.

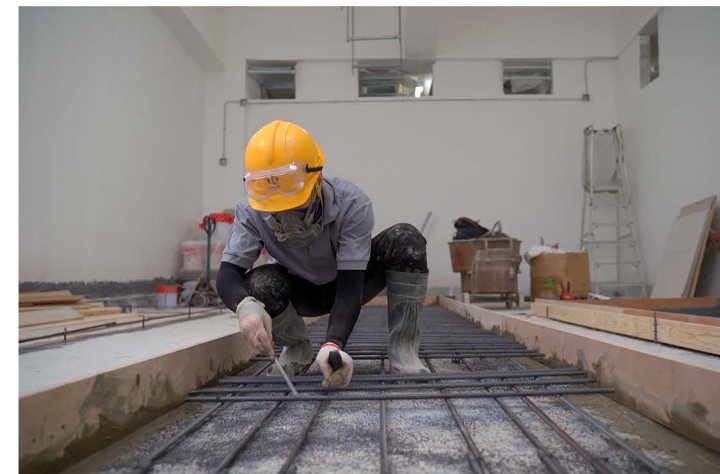
Data Centre



International Digital Infrastructure Company

Trend of Data Centre

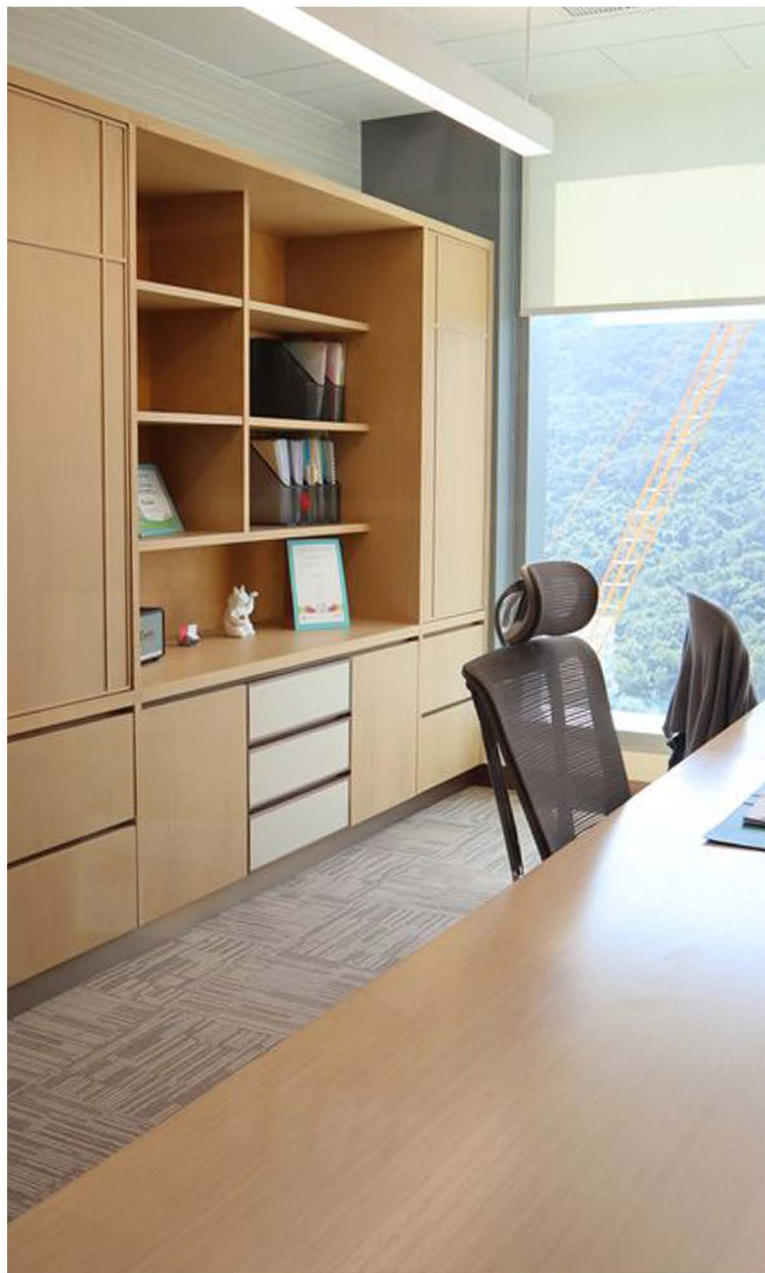
The trend of big data, industry 4.0, IoT, 5G and cloud computing is moving faster than ever. The demand of Data Centre capacity is huge. Keio Group was a Main Contractor of the project, responsible for consolidating and delivering an integrated solution to the customer.





02 | Luxury Decor & Interior Renovation

Registered General Building Contractors can carry out the 187 types of minor work listed in Part 2 of Schedule 1 under the Building (Minor Works) Regulation.

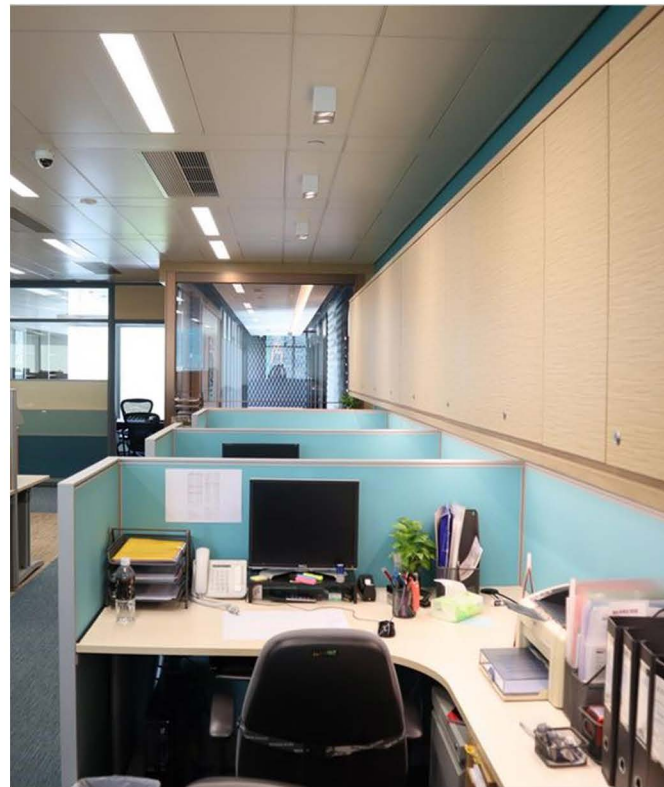


📍 Head Office of a Renowned Engineering Consulting Firm

Fit Out Construction

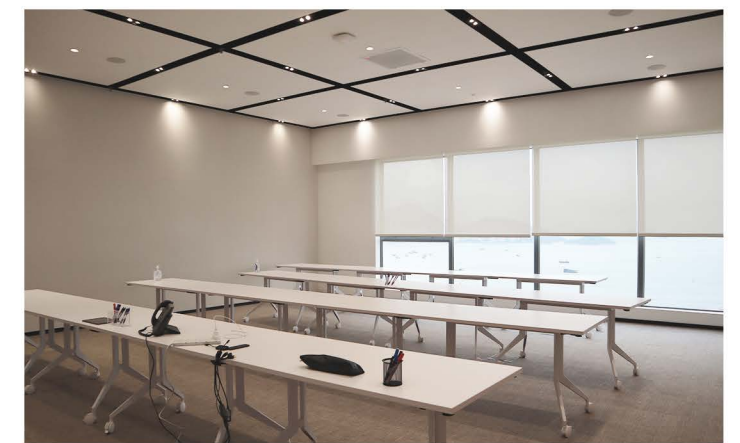
KCL Construction has been worked tightly with Alex Fraser, the interior design firm, strived to emerge the premise into a bright and daylight-filled space, in keeping with its superior surroundings.

KCL Construction is responsible for organizing and carrying out all fit out works, from tiling, painting, furniture sourcing to MEP & Fire System services.



Workplace Wellbeing

To cope with the trend of workplace wellbeing, there are more and more employers dedicated to creating an engaging and healthy working space. KCL Construction was responsible for the design, supply and installation of an international luxury brand's office interior fitting out, building services installation, millwork supply and installation.

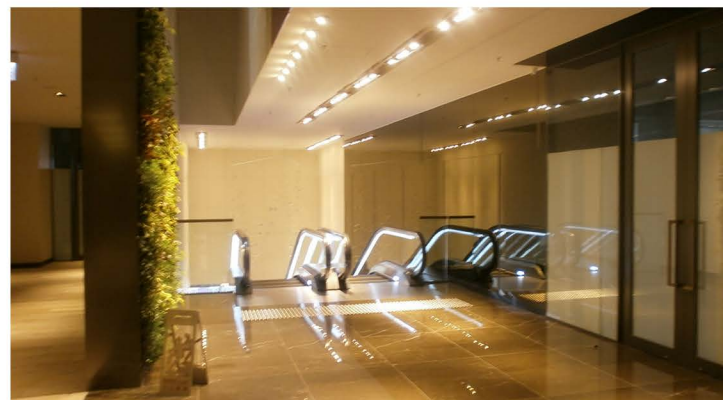


📍 Head Office of a Luxury Brand



03 | Alteration & Additions

According to the laws of Hong Kong, any person who intends to carry out alterations and additions works (A&A works) is advised to consult building professionals for advice and make formal application for approval and consent from the Building Authority.



📍 Revitalized Commercial Building in East Kowloon CBD



Commercial



Residential



📍 Large-scale Detached Residence

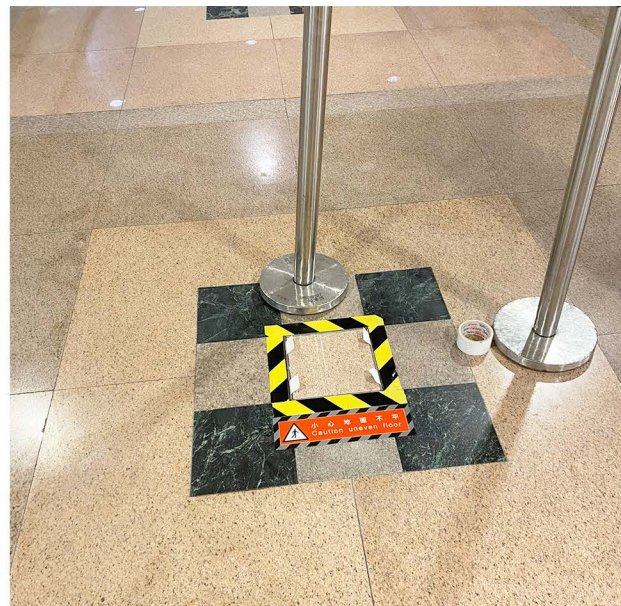


04 | Repair & Maintenance

Registered General Building Contractors are authorized to carry out investigations and detailed inspections, and perform repair and maintenance works under supervision of a qualified person.



📍 Iconic Shopping Arcade in Kowloon



05 | Removal/ Demolition

Registered General Building Contractors are qualified to perform building demolition work of a building or demolition of any substantial or significant part of a building.



📍 Warehouse of a Luxury Brand